

Multiple uses of coastal mapping data

In keeping with the Integrated Ocean and Coastal Mapping (IOCM) focus on multi-use data, NOAA's National Geodetic Survey (NGS) has recently begun making coastal aerial imagery and topographic Light Detection And Ranging (LiDAR) data publicly available. While these remotely-sensed data are used internally by NGS for shoreline mapping, they can also be very useful in support of a wide range of coastal science and management applications. In one recent IOCM Pilot Project, NGS delivered 62 square nautical miles of topographic LiDAR and digital imagery for Kachemak Bay, Alaska to NOAA's Coastal Services Center (CSC) for public dissemination via the DigitalCoast web portal (Figure 1). Many coastal scientists and managers have already reported substantial benefits from these data.

Comment [r1a1]: I wonder if we should try to use pics from the Kachemak Bay data instead?

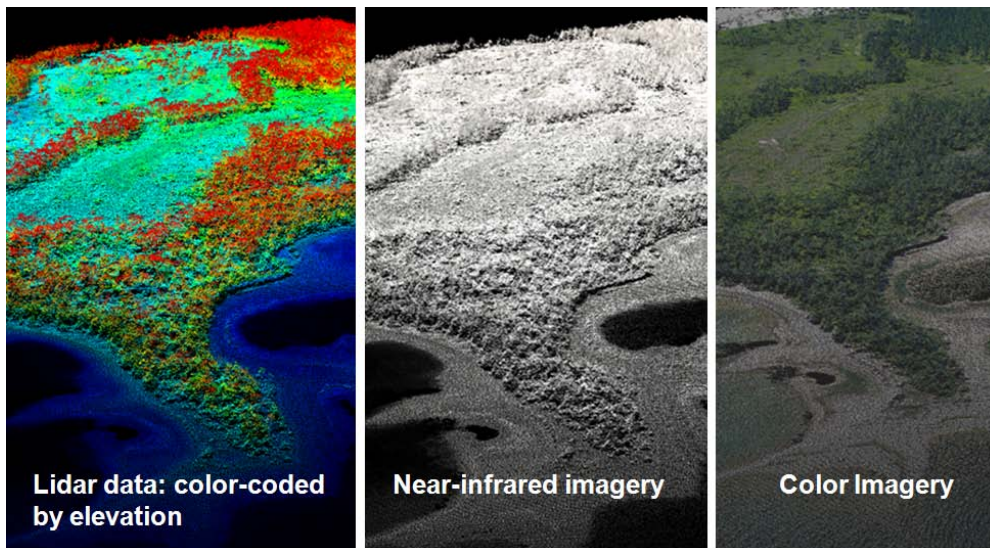


Figure 1: Coastal mapping source data used in NGS' shoreline mapping program.