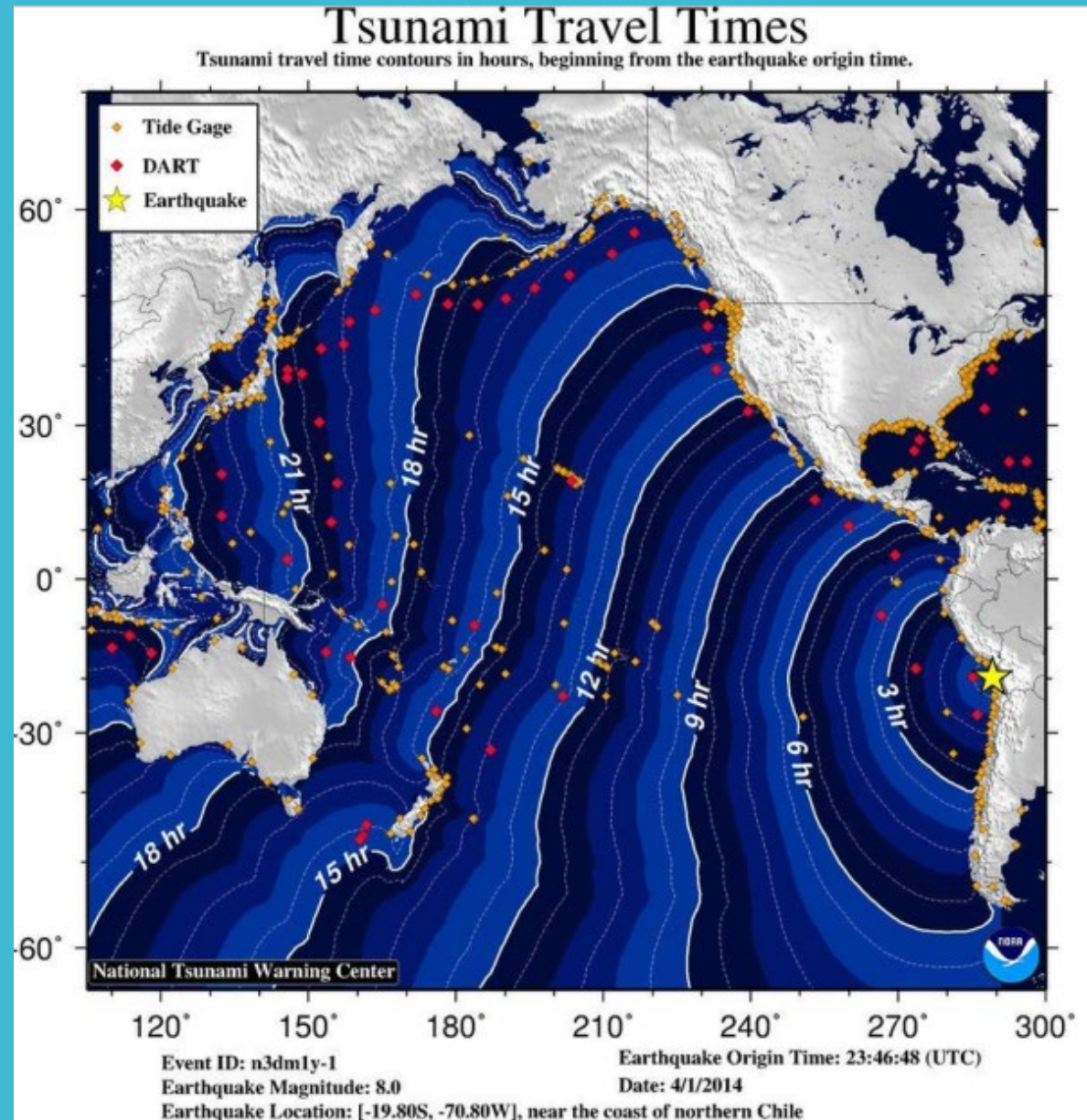


PROVIDING ECONOMIC SECURITY FOR ALL HAWAIIAN ISLANDS

Capt. Ed Enos
HAWAII PILOTS
ASSOCIATION



**MARINERS NEED EASY
ACCESS TO ACCURATE,
RELIABLE, REAL-TIME
OBSERVATIONAL DATA
AT ALL COMMERCIAL
PORTS**



INTERRUPTIONS OF SERVICE LEADS TO:

DELAYED DELIVERIES OF
FOOD, MEDICINE, FUEL, &
OTHER CONSUMABLES



INTERRUPTIONS OF SERVICE LEAD TO:

DELAYED DELIVERIES OF
FOOD, MEDICINE, FUEL, &
OTHER CONSUMABLES

IMPACTS ALL MILITARY
FORCES STATEWIDE &
MILITARY READINESS



INTERRUPTIONS OF SERVICE LEAD TO:

DELAYED DELIVERIES OF
FOOD, MEDICINE, FUEL, &
OTHER CONSUMABLES

IMPACTS ALL MILITARY
FORCES STATEWIDE &
“MILITARY READINESS”

UNRELIABLE ENERGY
PRODUCTION FROM
PRIMARY POWER
GENERATION SOURCES



WHAT PRODUCTS OR SERVICES DO LOCAL MARINERS NEED FROM NOAA?

*MUST HAVE EASY ACCESS FROM A TUG OFFSHORE OR SHIP IN
TRANSIT, AT SEA. THINK ABOUT MOBILE PHONES OR LAPTOPS
BEING USED BY TUG CAPTAINS AND PILOTS.*

1. ACCURATE BATHYMETRIC DATA FOR ALL OUR HARBORS
1. REAL-TIME WIND SPEED AND DIRECTION OBSERVATIONS
1. REAL-TIME SEA AND SWELL OBSERVATIONS
1. EASY ONLINE ACCESS FROM VESSELS OFFSHORE
1. DATA GATHERING SENSORS MUST BE AT COMMERCIAL HARBOR LOCATIONS
1. SYSTEM MUST BE ROBUST AND RESILIENT TO WITHSTAND HEAVY WEATHER

HONOLULU HARBOR

PIER ONE WEATHER
STATION INSTALLATION
ON LIGHT POLE FOR
LARGE CRUISE SHIPS

JOINT VENTURE WITH:

- STATE DOT-HARBORS
- HAWAII PILOTS ASSOC.
- PacIOOS
- HAWAII STEVEDORES

"PROJECT WAS A SAFETY
ISSUE CONDITION BY ALL
CONCERNED PARTIES"



BATHYMETRIC DATA

*DO WE HAVE ENOUGH
WATER?*

*GOOD DATA TODAY IS
BETTER THAN PERFECT
DATA NEXT YEAR*

*WE DON'T CARE WHO DOES
THE SURVEY*

*WE DO CARE WHEN IT WAS
DONE*

*SURVEYS SHOULD BE
ROUTINE, NOT A SPECIAL
PROJECT*



SIMULATOR IMAGE FROM MITAGS FACILITY IN SEATTLE

KCT PROJECT
CONCEPTION WAS
ALMOST 20 YEARS
AGO. TODAY, THE
ACTUAL SHIPS
NAVIGATING THIS
BASIN ARE POST
PANAMAX HULLS.



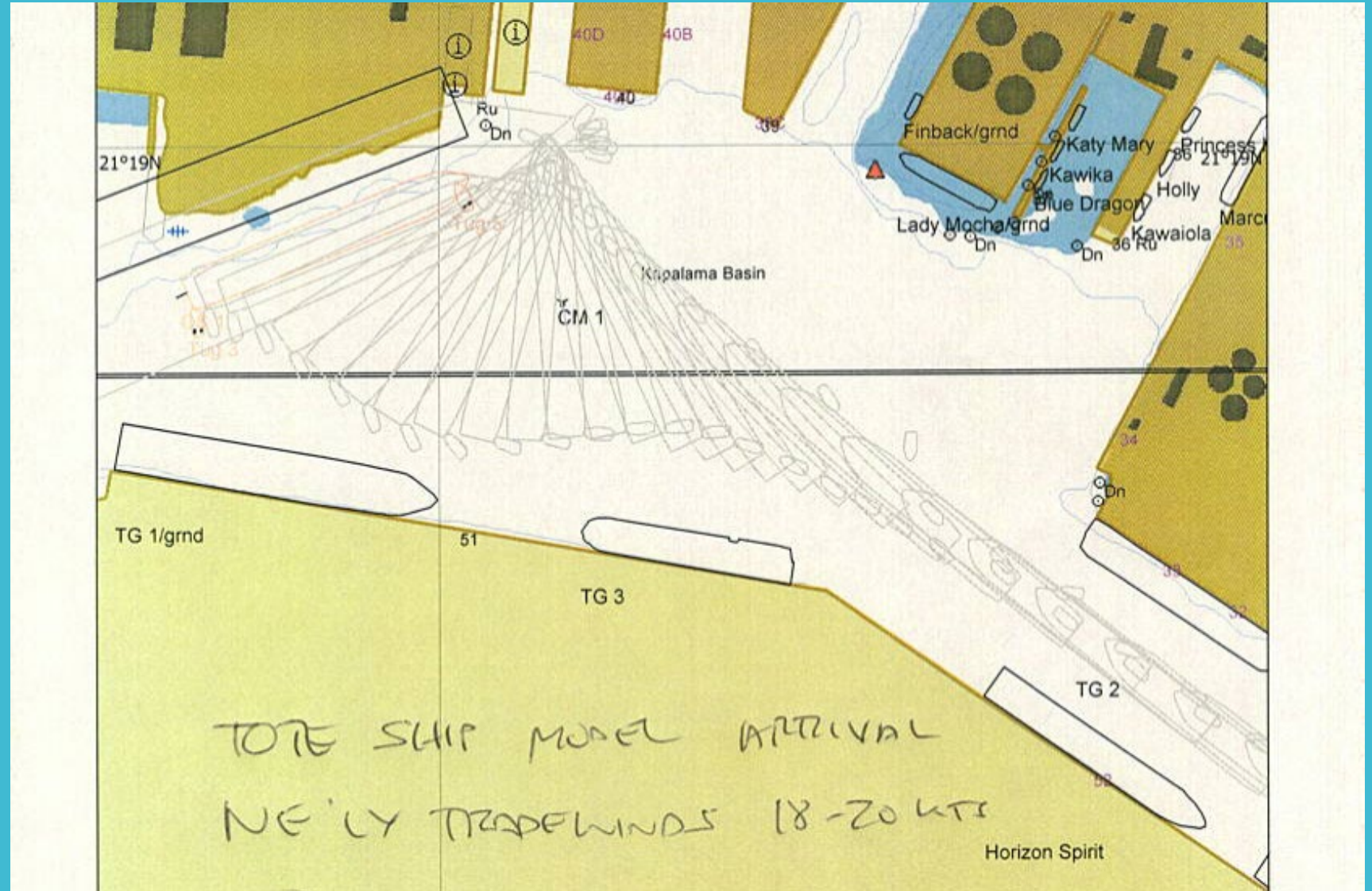
COMPUTER
SIMULATION IS
BECOMING THE
NORM IN THE
MARITIME
INDUSTRY. THE
FOUNDATION IS
ACCURATE
GRAPHICS TO
DEPICT WHAT
MARINERS
ACTUALLY SEE IN
REAL LIFE. IT
STARTS WITH THE
CHARTS WE USE ALL
THE TIME.

Images courtesy of PMI



MITAGS SIMULATOR IMAGE

PROVIDING MITAGS
AN UPDATED CHART
OF KAPALAMA BASIN
WILL ALLOW PILOTS
TODAY TO RUN
SIMULATED
EXERCISES AT THEIR
FACILITY, WELL
BEFORE WE HAVE TO
DO IT IN REAL LIFE IN
TWO YEARS. **SAFETY!**



KAPALAMA CONTAINER TERMINAL

*CAN WE GET A
NEW CHART
SHOWING THE
NEW PIER AS
FINISHED?*

*OR MUST WE WAIT A
FEW MORE YEARS?*



WEATHER DATA

KAHULUI, MAUI :
HAWAII'S MOST VULNERABLE
PORT, DUE TO SEASONAL
WEATHER CONDITIONS



JEAN ANNE arrival into Kahului, Maui

This RO-RO ship
transits every other
week here. This video
was created on a very
nice day with “optimal”
weather conditions.
Then you see the worst
conditions.



Local mariners need NOAA's help to continue to provide a safe & efficient supply chain to all the islands in our State. The Dept. of Defense also benefits from your investment.

Mahalo!

