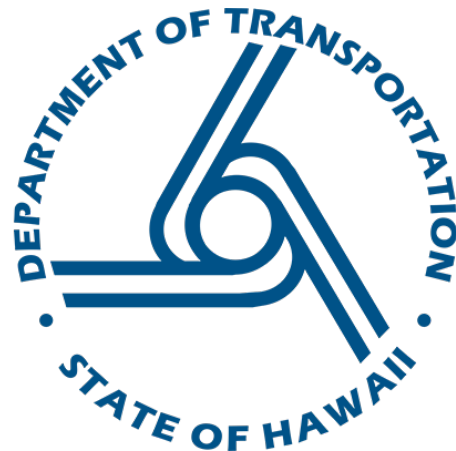
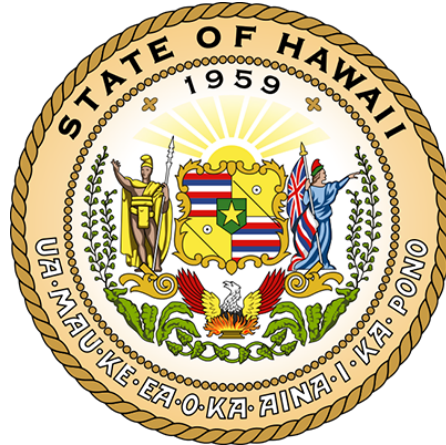


NOAA Support to DOT Harbors Just-In-Time Delivery of Goods

Eduardo P. Manglallan



DOT Harbors

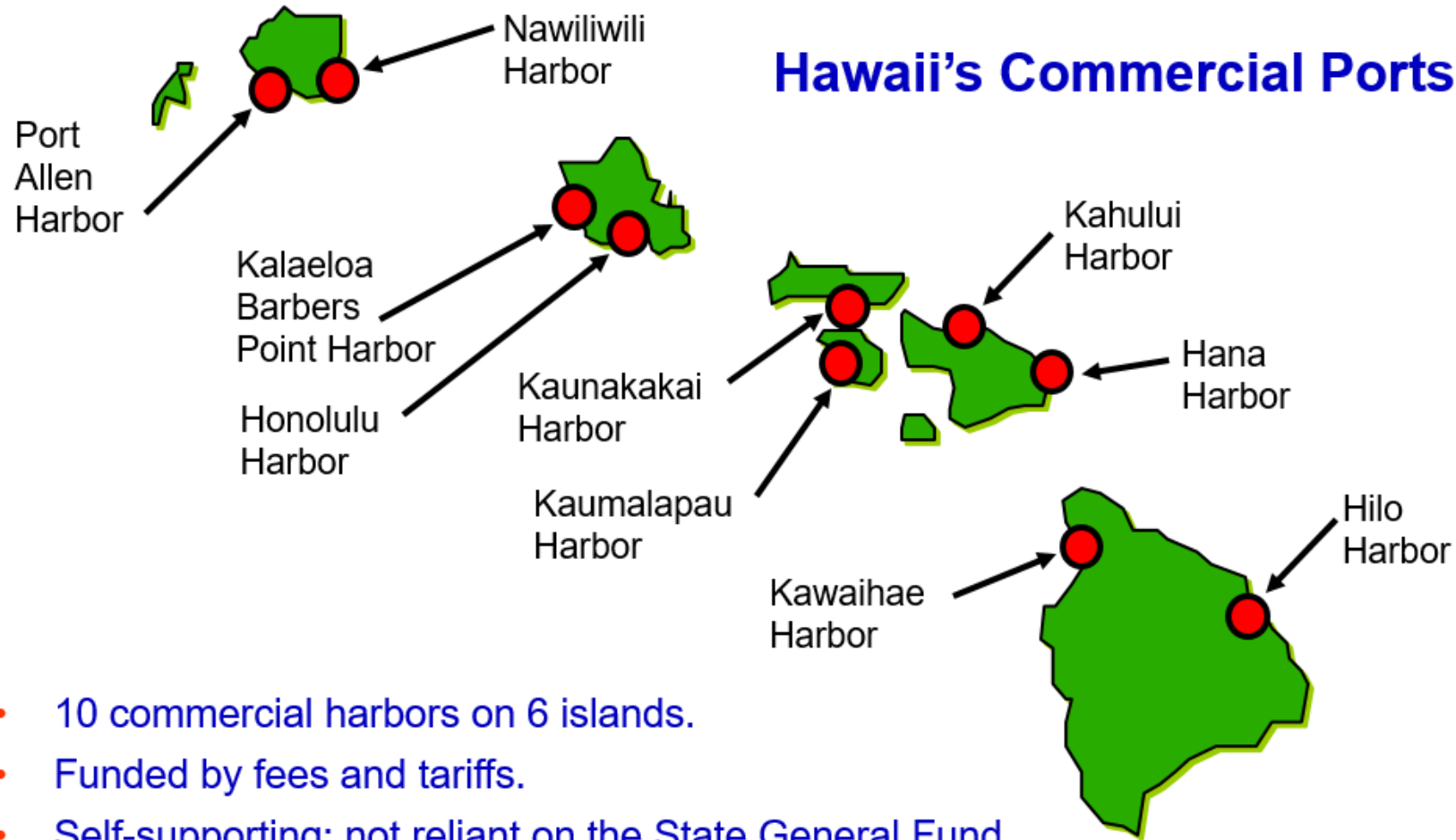
- Hawai'i, its people, and its history are tied to the ocean as a source of sustenance, transport, and commerce.
- The State of Hawai'i Department of Transportation Harbors Division (HDOT Harbors) is tasked with the mission of effectively managing and operating the statewide commercial harbors system that facilitates the efficient movement of people and goods to, from, and between the Hawaiian islands.



Honolulu Harbor, Henry Walker, 1843



STATEWIDE HARBORS SYSTEM



GROWTH OF HAWAII'S HARBORS

- A DBEDT study revealed that about 80% of all goods used in Hawaii are imported.*
- Of this amount, 98.6% of the goods are brought in through the commercial harbors system.



**Size and Growth Potential of Hawaii's
Maritime Industry, Lee & Olive, 1994*

IMPORTANCE OF HARBORS

- A number of maritime operations utilize the commercial harbors system:
 - Cargo shippers.
 - Passenger vessels (cruise and excursion).
 - Commercial fishing operations.
 - Vessel building and repair yards.
 - Marine Research facilities.
 - Military operations, incl. transshipment to Pacific Isl.

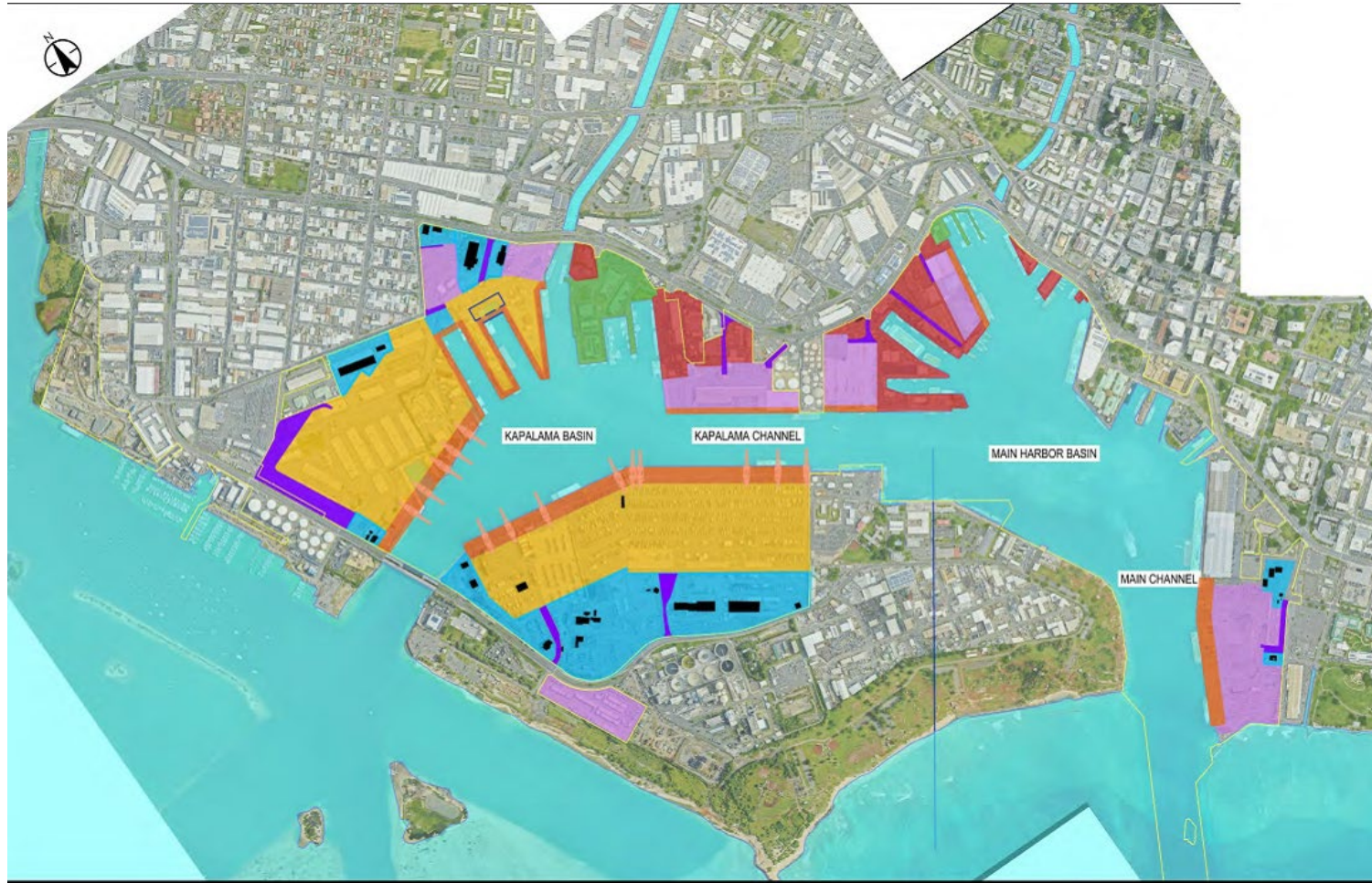


HONOLULU HARBOR

- Largest and primary commercial harbor for the state. Approximately, 320,000 forty-foot equivalent units per year.
- Hub of the statewide ocean port system.
- Cargo is transshipped to neighbor islands as well as Guam, the Northern Mariana Islands(CNMI), American Samoa, and Free Alongside Ship (FAS) ports. Approximately, 36,000 forty-foot equivalent units per year.
- Handles domestic and foreign containerized cargo.
- Berths for fuel operations.
- Area for cruise ships and day excursion vessels.



HONOLULU HARBOR



LEGEND:

CARGO WHARF APRON

CONTAINER STORAGE

GENERAL CARGO / AUTO STORAGE

TRUCK GATES

BUILDINGS & ANCILLARY FACILITIES

FISHING FLEET

MARITIME SUPPORT

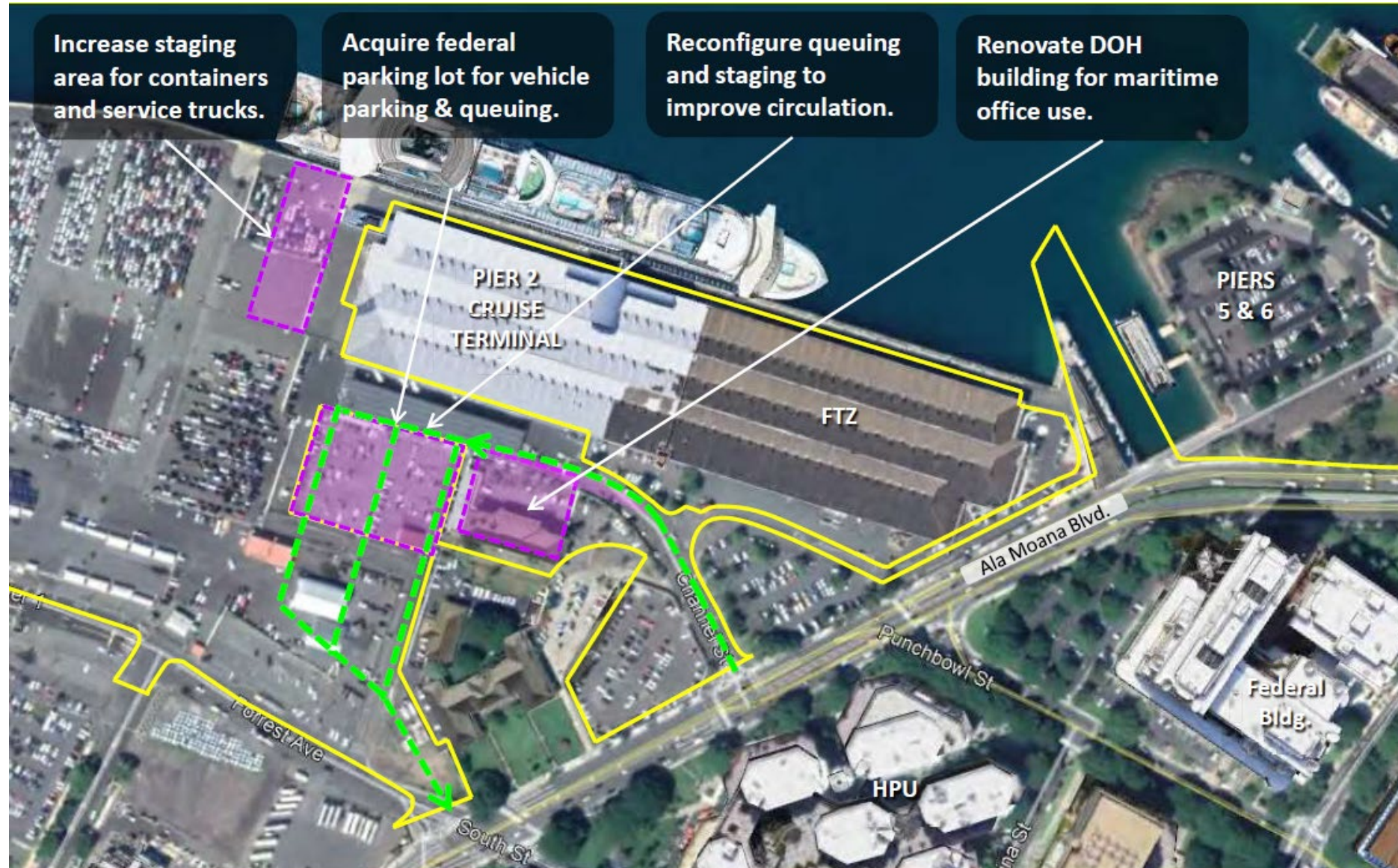
HARBOR BOUNDARY

PROPOSED HARBOR BOUNDARY

PIER DESIGNATION



Pier 2

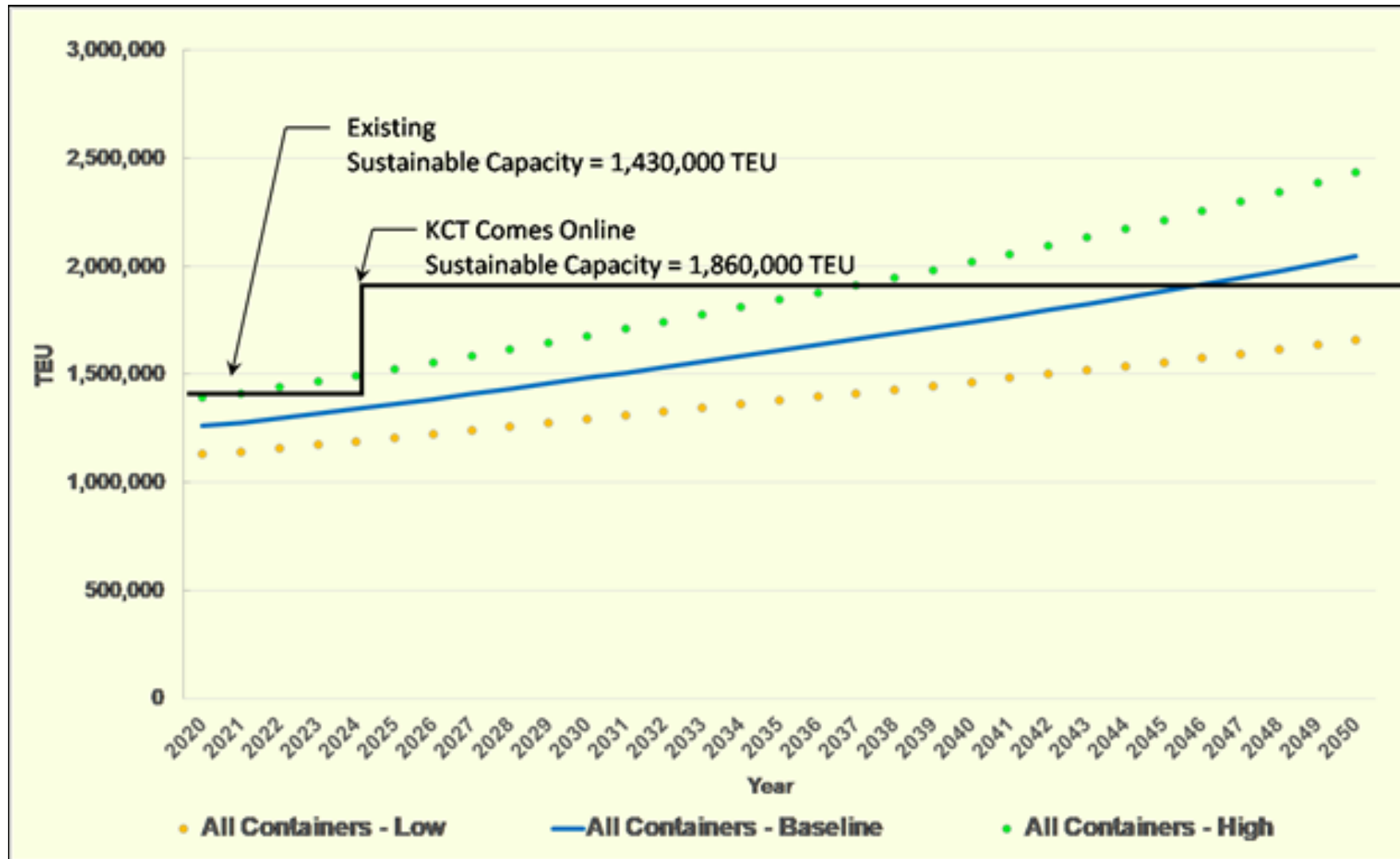


Kapalama Container Terminal (KCT)

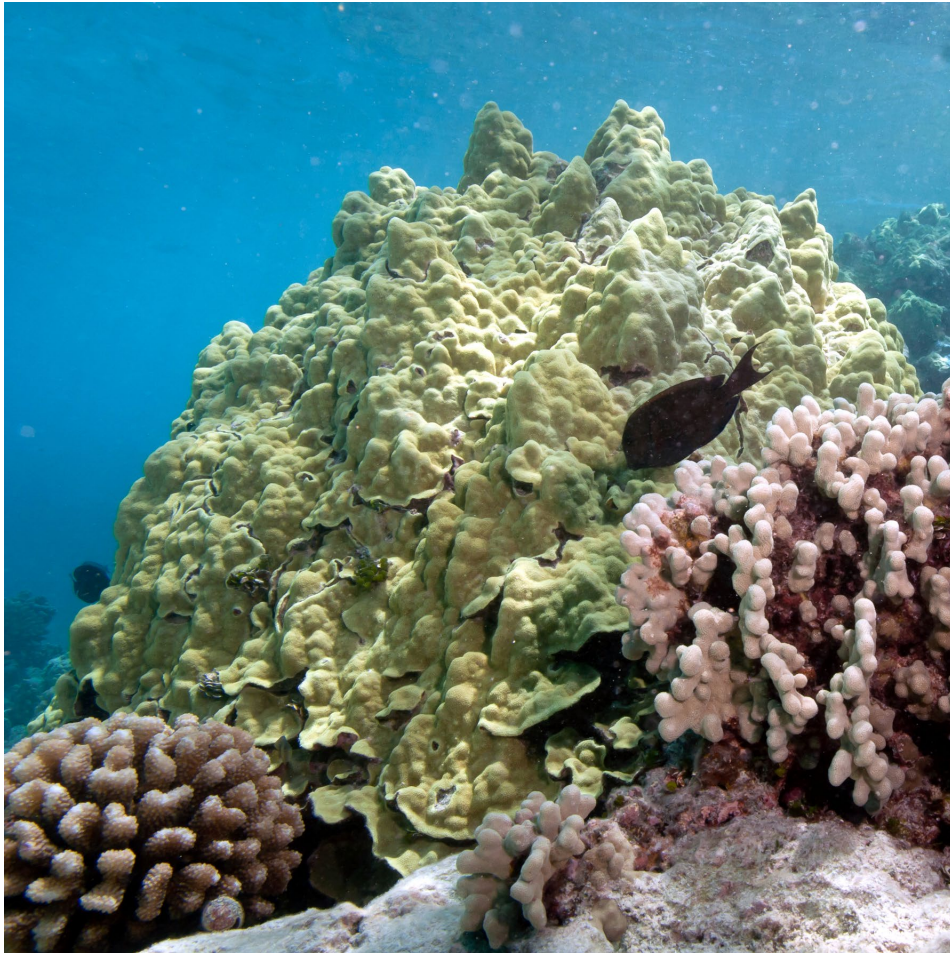


- Pier 41, 42, and 43
- 84-acre cargo yard, 1,800 ft. of new berthing space.
- 50,000 truckloads per year moving directly between facilities removing congestion from Highway.
- \$555M, six-year, two-phase project.
 - Completion aimed for April 2024

Kapalama Container Terminal (KCT)



Environmental Protection and Mitigation



- Biosecurity is a top priority for Harbors as we have unique and fragile ecosystem.
 - Potentially invasive species such as Porites Lobata, algae, and others produce a negative effect on our coral growth.
- DOT's obligation to DAR is to conform to a Special Activities Permit issued by DLNR.
- We need to make a distinction now before a nuisance species become detrimental to our biosecurity may wreak havoc on our native marine life ecosystems.