



Office of Coast Survey

RDML Benjamin Evans, Director

February 28, 2023

HYDROGRAPHIC SERVICES REVIEW PANEL



Coast Survey Strategic Planning

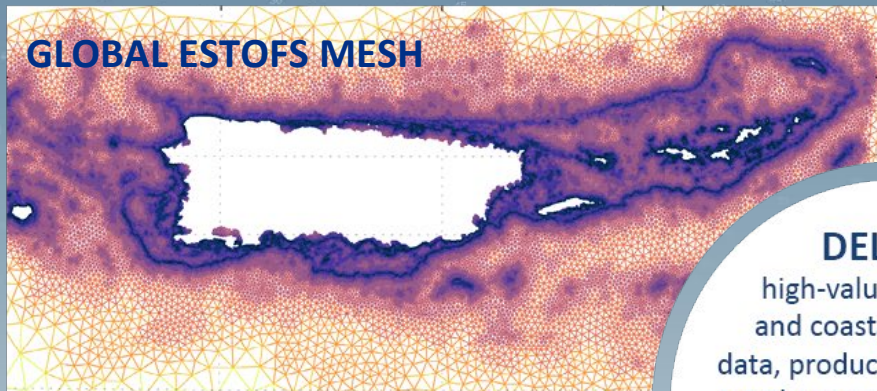
Navigate with Confidence

HYDROGRAPHIC SERVICES REVIEW PANEL

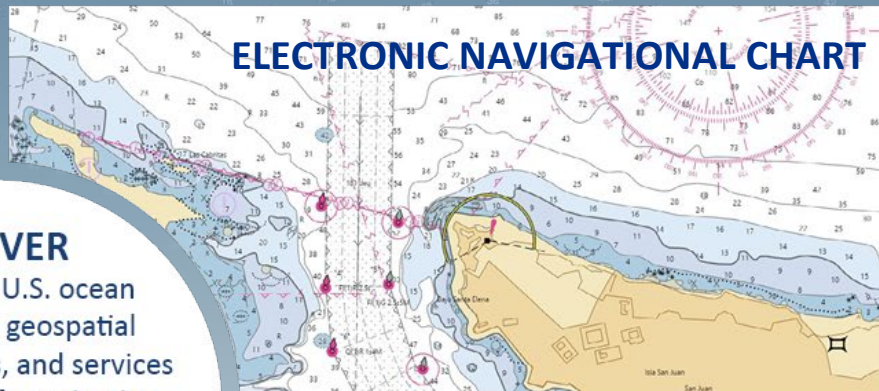


Coast Survey Strategic Planning

GLOBAL ESTOFS MESH



ELECTRONIC NAVIGATIONAL CHART



DELIVER

high-value U.S. ocean
and coastal geospatial
data, products, and services
to advance safe navigation,
emergency response, and data-
driven decision making to
support a sustainable
blue economy.

**S-111 SURFACE CURRENT
DATA**



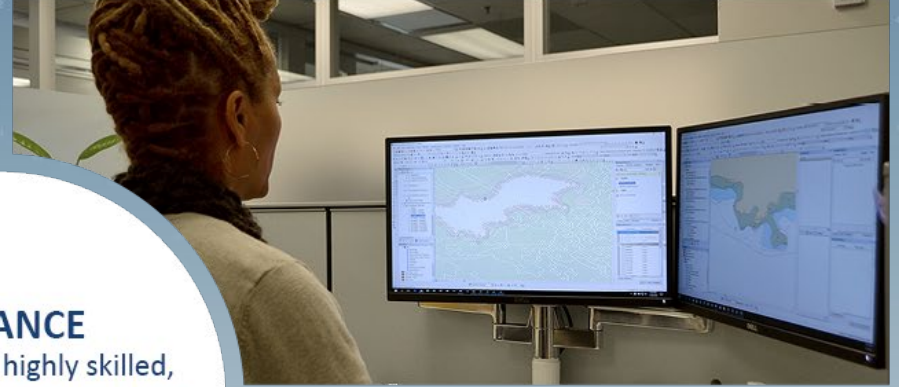
**NATIONAL BATHYMETRIC
SOURCE**



HYDROGRAPHIC SERVICES REVIEW PANEL



Coast Survey Strategic Plan



ENHANCE
and sustain a highly skilled,
diverse, and thriving workforce
prepared to adapt to changing
mission needs.



HYDROGRAPHIC SERVICES REVIEW PANEL



Coast Survey Strategic Plan

PLAN and PRIORITIZE



COLLECT and VERIFY DATA



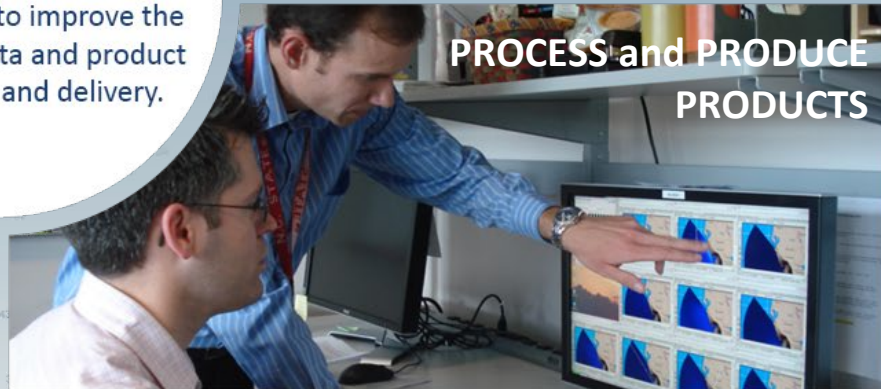
ACCELERATE

the evolution of the Coast Survey organization, systems, and processes to improve the efficiency of data and product development and delivery.

ARCHIVE and PUBLISH DATA



PROCESS and PRODUCE PRODUCTS



HYDROGRAPHIC SERVICES REVIEW PANEL



Budget and Legislation

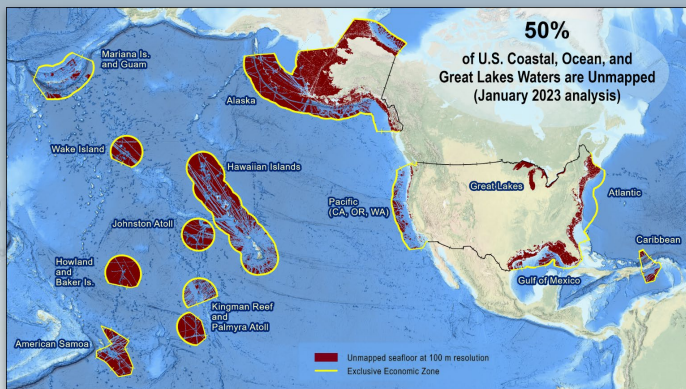
Transitioning
new concepts
and systems to
operations



Providing technical
support for mapping
and surveying
operations



Leveraging
public-private
partnerships for
advancing our
mapping efforts



Developing and
diversifying our
seafloor and
lakefloor mapping
workforce

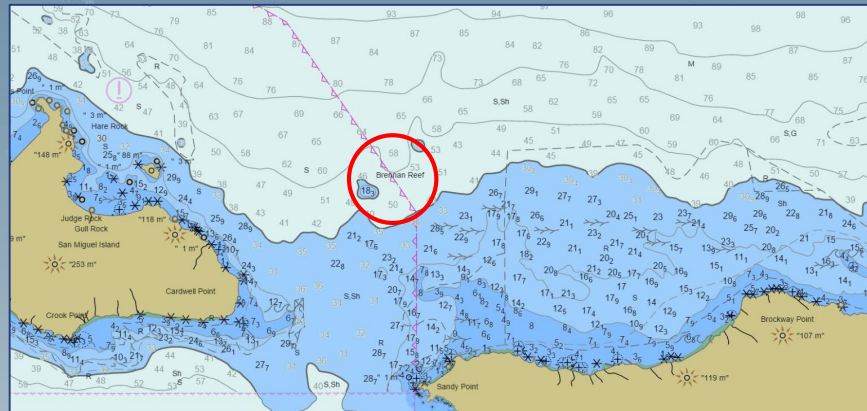


HYDROGRAPHIC SERVICES REVIEW PANEL



Budget and Legislation

NOAA Ships *Fairweather* and *Rainier*

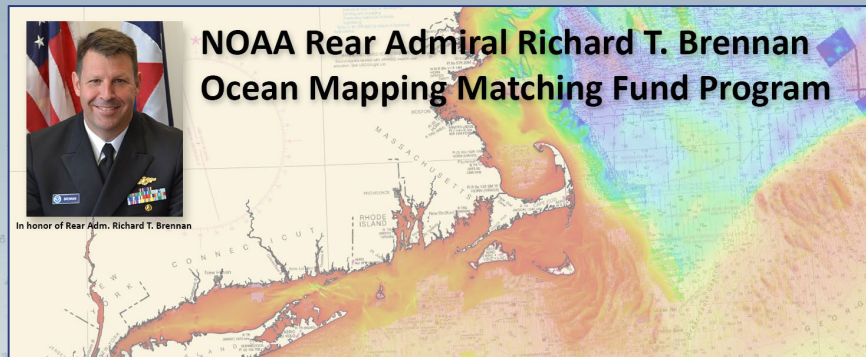


**Class B vessel
concept
illustrations**



In honor of Rear Adm. Richard T. Brennan

**NOAA Rear Admiral Richard T. Brennan
Ocean Mapping Matching Fund Program**



Data and Product Updates

National Bathymetric Source

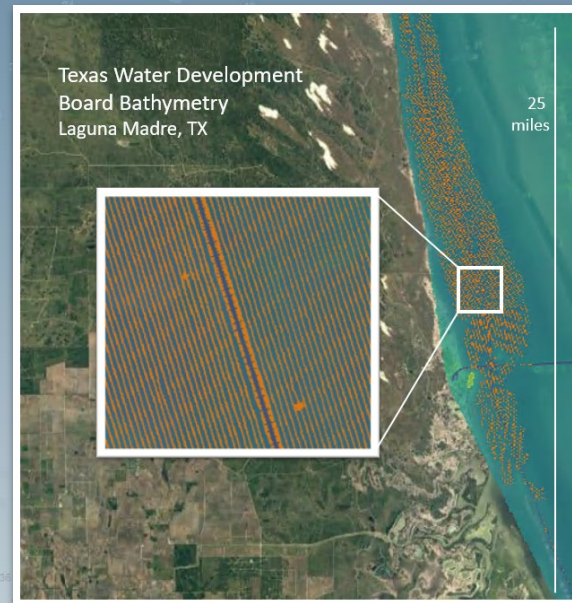


Progress on the NBS build out in September 2022 (New England and Gulf of Mexico).



Progress on the NBS build out in February 2023 (added US Caribbean and Southeast).

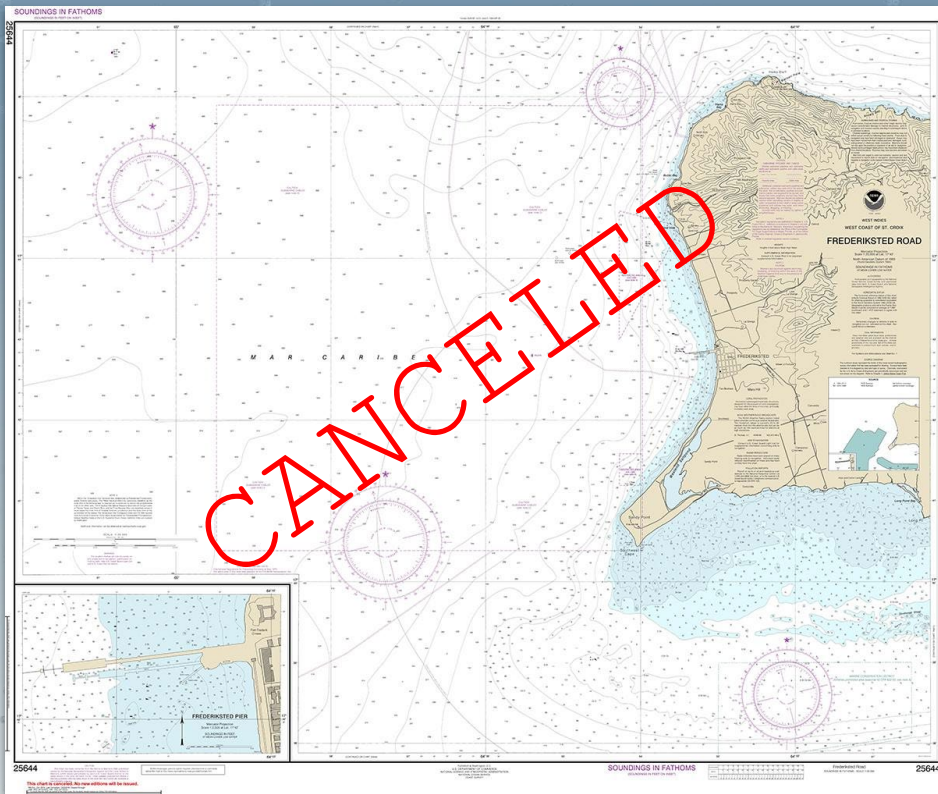
External Source Data



An aerial map showing high resolution bathymetry collected and submitted to the ESD team by the Texas Water Development Board near Laguna Madre, Texas

Data and Product Updates – Nautical Charts

Electronic Navigational Chart Rescheme



Raster Chart Coverage



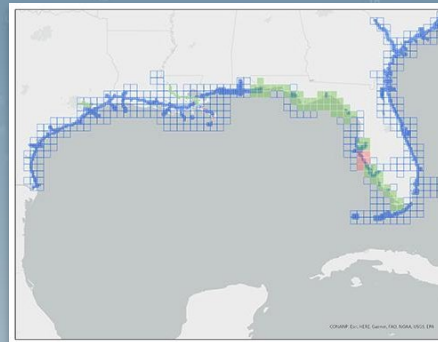
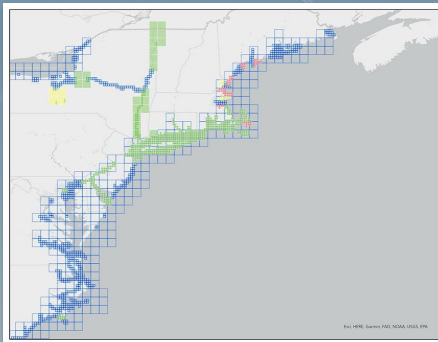
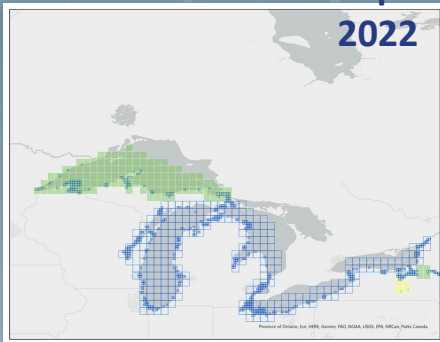
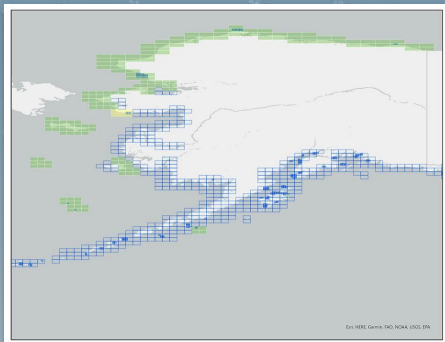
Reschemed ENC Coverage



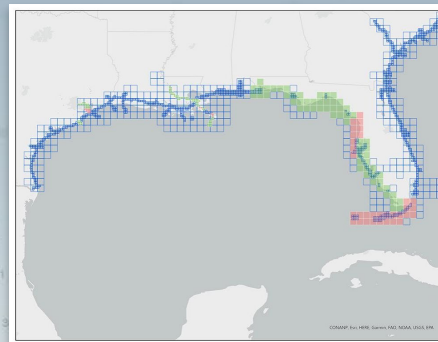
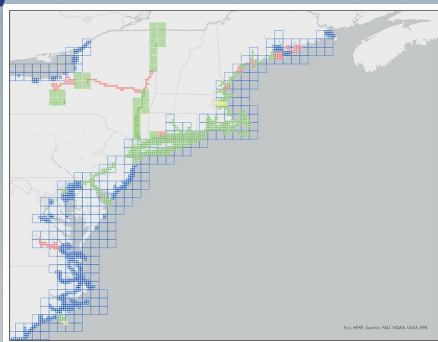
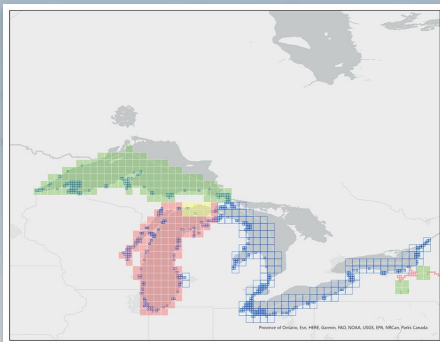
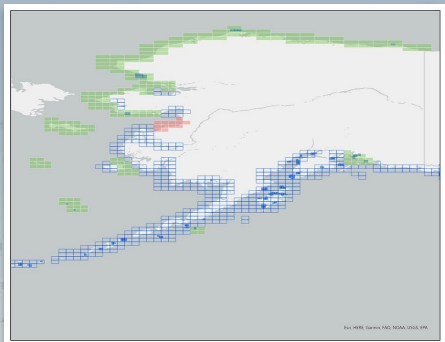
Data and Product Updates – ENC regridding status

September

2022



February 2023



Planned



In work



Validation




Available to public

HYDROGRAPHIC SERVICES REVIEW PANEL








Data and Product Updates – Nautical Charts

**Office of Coast Survey**
National Oceanic and Atmospheric Administration
U.S. Department of Commerce





NOAA Custom Chart application

NOAA Custom Chart Version 2.0
Choose your own chart scale and location
Save charts to a personal chart catalog



Help Documentation

Use these links to open the two-page Quick Start Guide or the detailed-instructions in the User Guide. U.S. Chart No. 1 describes the meaning of symbols used on nautical charts.

-  Quick Start Guide
-  User Guide
-  Creating a Custom Chart and a Personal Chart Catalog (12.23)
-  Legend (U.S. Chart No. 1)

New in NOAA Custom Chart Version 2.0 Enhancements

- Added Personal Chart Catalog functionality
 - Enables users to save their own custom chart parameters for later use.
 - Enables users to share their custom chart parameters with others.
 - Enables users to reload saved chart parameters to recreate charts with newly updated information.
- Streamlined user interface with clearer icons and descriptions for each step.
- Modified additional symbology to emulate paper chart.

1000mi

Home | Legend | Contact Us | Privacy Policy | Disclaimer | Information Quality | Freedom of Information Act | USA.gov | Ready.gov | EEO | Take our Survey

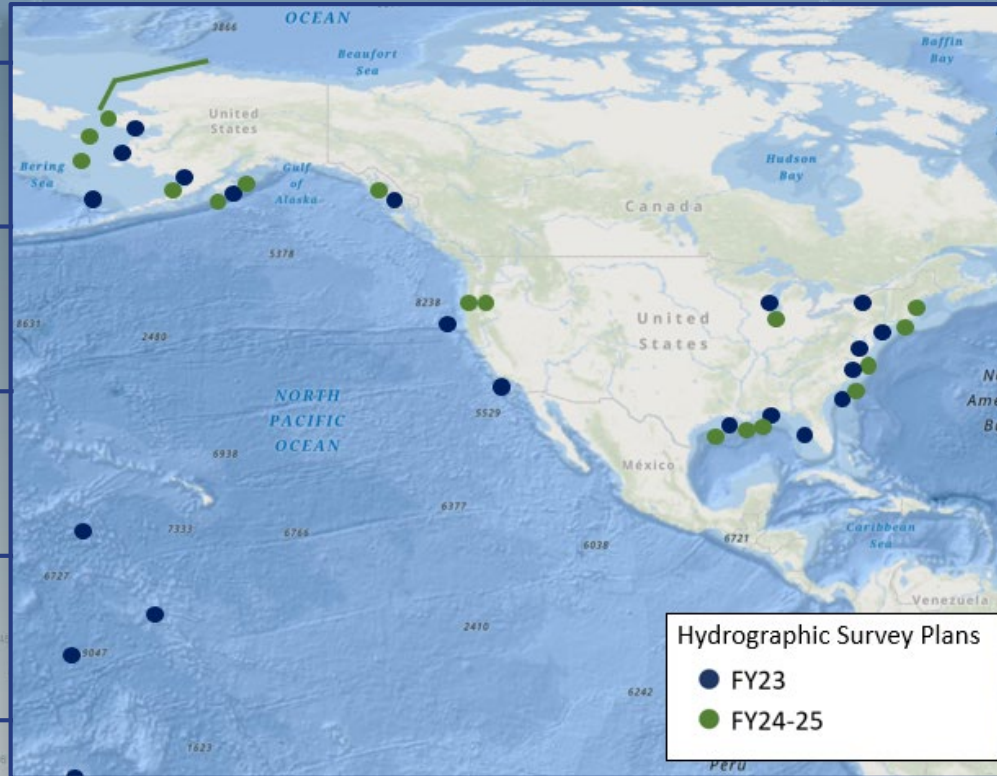
Website owned by: Office of Coast Survey

Powered by **esri**

Eri, GEBCO, DeLorme, NaturalVue | Eri, GEBCO, IHO-IOC GEBCO, DeLorme, NGS

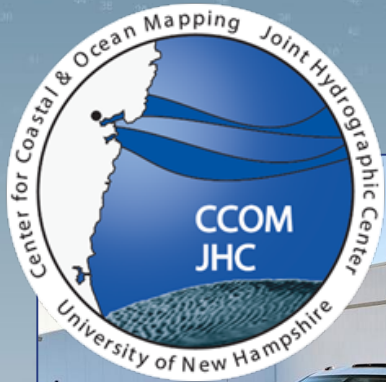


The 2023 Field Season



HYDROGRAPHIC SERVICES REVIEW PANEL

Joint Hydrographic Center and Center for Ocean Mapping and Innovative Technologies



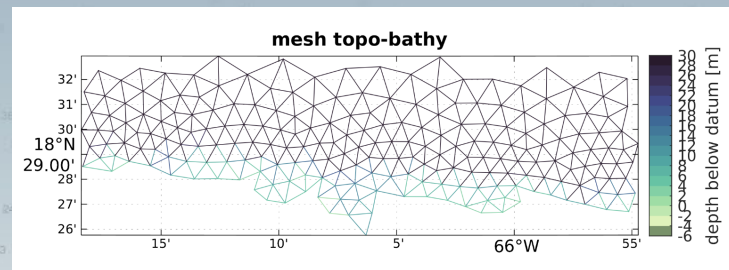
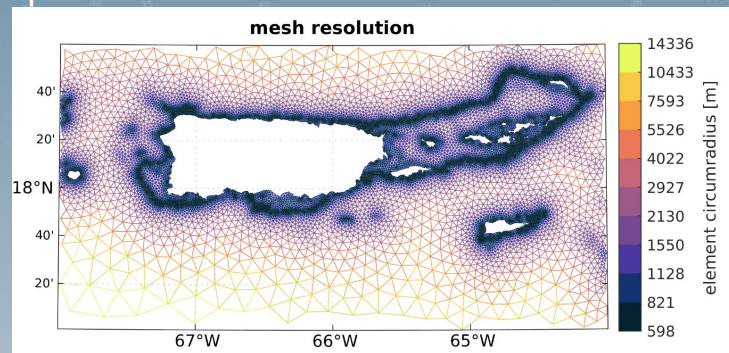
HYDROGRAPHIC SERVICES REVIEW PANEL



Regional /International Activities

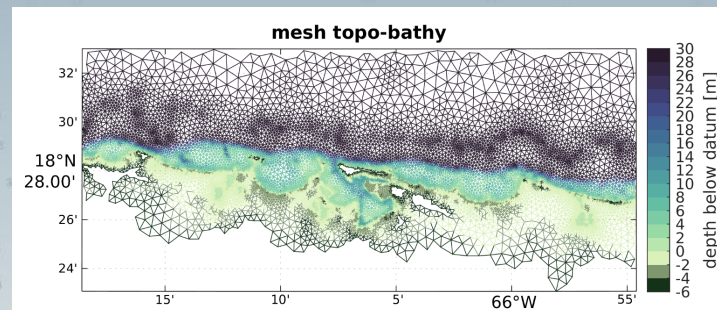
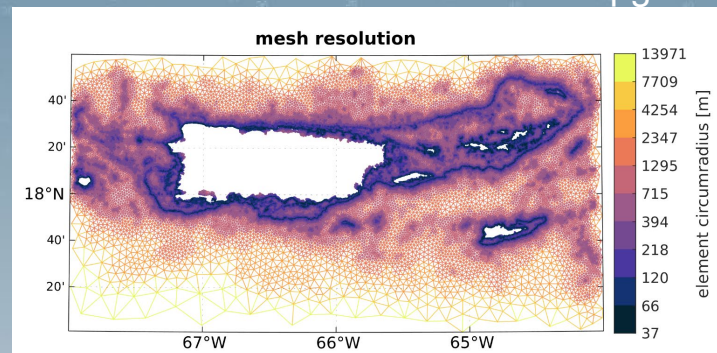
The Surge and Tide Operational Forecast System (STOFS-2D-Global)

Operational



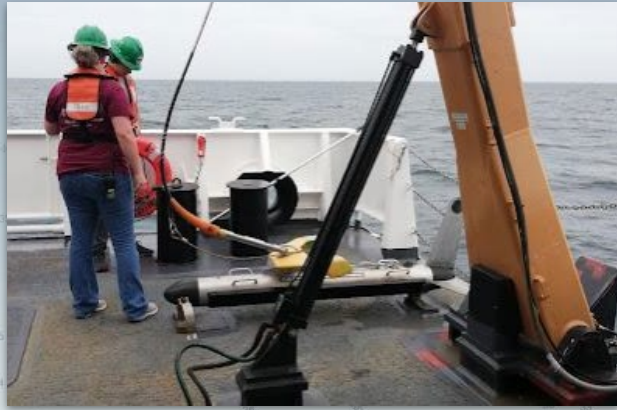
San Juan zoom

Upgrade



San Juan zoom

Regional /International Activities



HYDROGRAPHIC SERVICES REVIEW PANEL





Thank You!

HYDROGRAPHIC SERVICES REVIEW PANEL

